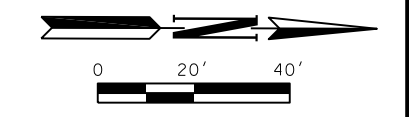
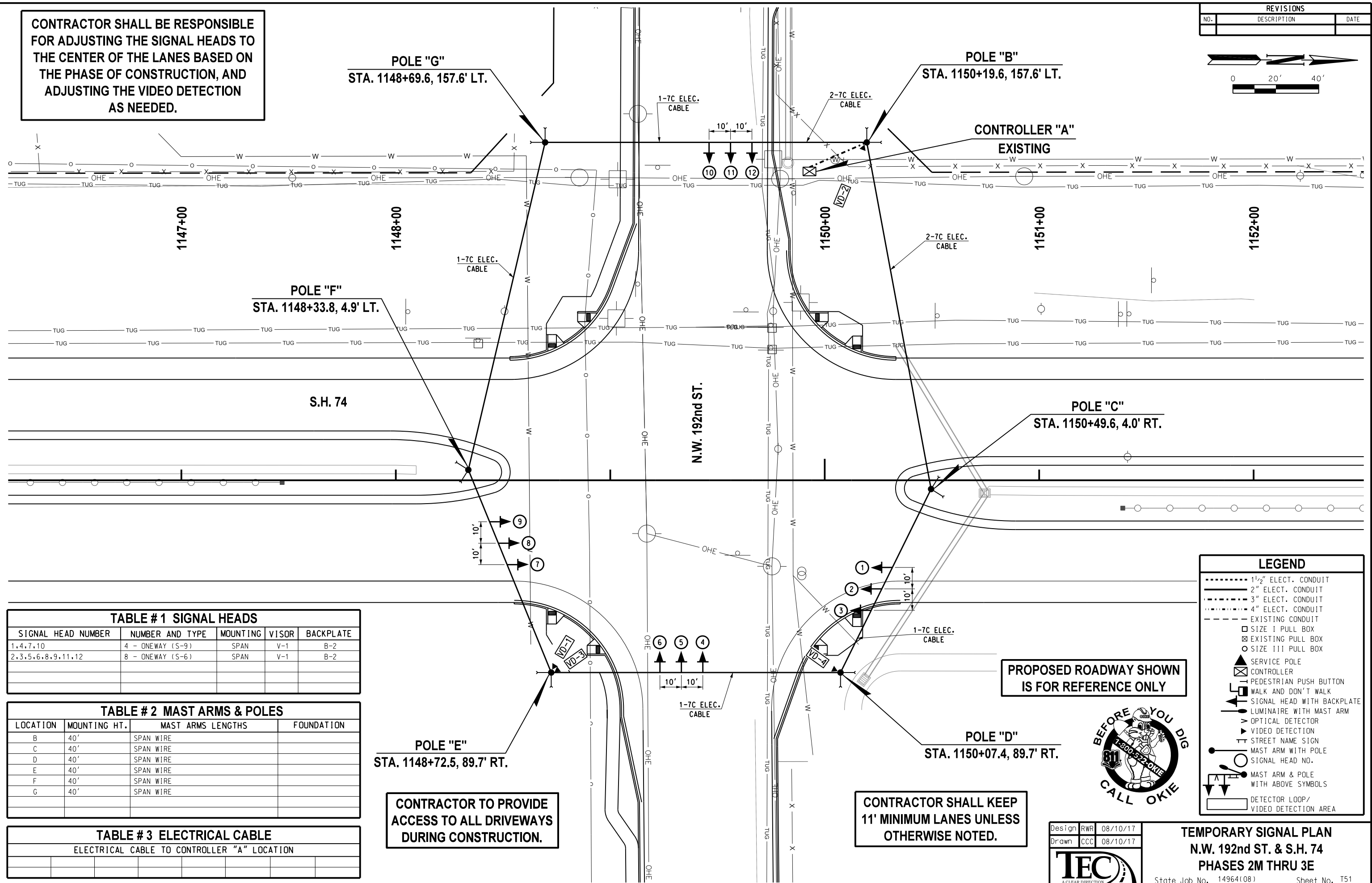


REVISIONS		
NO.	DESCRIPTION	DATE



CONTRACTOR SHALL BE RESPONSIBLE FOR ADJUSTING THE SIGNAL HEADS TO THE CENTER OF THE LANES BASED ON THE PHASE OF CONSTRUCTION, AND ADJUSTING THE VIDEO DETECTION AS NEEDED.



POLE "F"
STA. 1148+33.8, 4.9' LT.

POLE "G"
STA. 1148+69.6, 157.6' LT.

POLE "B"
STA. 1150+19.6, 157.6' LT.

CONTROLLER "A"
EXISTING

POLE "C"
STA. 1150+49.6, 4.0' RT.

POLE "D"
STA. 1150+07.4, 89.7' RT.

POLE "E"
STA. 1148+72.5, 89.7' RT.

CONTRACTOR TO PROVIDE ACCESS TO ALL DRIVEWAYS DURING CONSTRUCTION.

CONTRACTOR SHALL KEEP 11' MINIMUM LANES UNLESS OTHERWISE NOTED.

PROPOSED ROADWAY SHOWN IS FOR REFERENCE ONLY

LEGEND	
-----	1 1/2" ELEC. CONDUIT
-----	2" ELEC. CONDUIT
-----	3" ELEC. CONDUIT
-----	4" ELEC. CONDUIT
-----	EXISTING CONDUIT
□	SIZE I PULL BOX
⊗	EXISTING PULL BOX
○	SIZE III PULL BOX
⊠	SERVICE POLE
⊠	CONTROLLER
⊠	PEDESTRIAN PUSH BUTTON
⊠	WALK AND DON'T WALK
⊠	SIGNAL HEAD WITH BACKPLATE
⊠	LUMINAIRE WITH MAST ARM
⊠	OPTICAL DETECTOR
⊠	VIDEO DETECTION
⊠	STREET NAME SIGN
⊠	MAST ARM WITH POLE
⊠	SIGNAL HEAD NO.
⊠	MAST ARM & POLE WITH ABOVE SYMBOLS
⊠	DETECTOR LOOP/VIDEO DETECTION AREA



SIGNAL HEAD NUMBER	NUMBER AND TYPE	MOUNTING	VISOR	BACKPLATE
1, 4, 7, 10	4 - ONEWAY (S-9)	SPAN	V-1	B-2
2, 3, 5, 6, 8, 9, 11, 12	8 - ONEWAY (S-6)	SPAN	V-1	B-2

LOCATION	MOUNTING HT.	MAST ARMS LENGTHS	FOUNDATION
B	40'	SPAN WIRE	
C	40'	SPAN WIRE	
D	40'	SPAN WIRE	
E	40'	SPAN WIRE	
F	40'	SPAN WIRE	
G	40'	SPAN WIRE	

ELECTRICAL CABLE TO CONTROLLER "A" LOCATION	

Design	RWR	08/10/17
Drawn	CCC	08/10/17



TEMPORARY SIGNAL PLAN
N.W. 192nd ST. & S.H. 74
PHASES 2M THRU 3E
State Job No. 14964(08) Sheet No. T51

08/10/17 G:\OP\Projects\1662B_S.H. 74 @ N.W. 192nd & N.W. 206th\CAD\T.C. SIG_B2ND_PHASE_3C.dgn